

Epson Connect Printer Setup For Windows

Follow the steps below to enable Epson Connect for your Epson printer in Windows.

Note: Make sure your product is set up with a wireless or Ethernet connection as described on the Start Here sheet for your product.

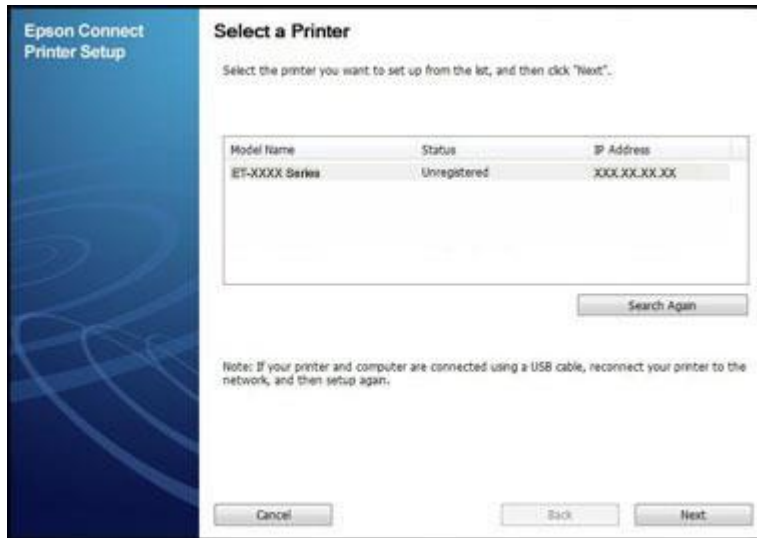
To see the **Start Here** sheet, select your product, select **Manuals**, then click **Start Here**.

1. Download and install the [Epson Connect Printer Setup Utility](#).
2. Agree to the End-User License Agreement, then click **Next**.



3. Click **Install**, then **Finish**.

4. Select your product, then click **Next**.



5. Select **Printer Registration**, then click **Next**.



6. Select **Agree**, then click **Next**.



7. When you see the **Register a printer to Epson Connect** message, click **OK**.

8. Do one of the following:

- If you're creating a new account, fill out the **Create an Epson Connect Account** form, then click **Finish**.
- If you're registering a new product with an existing account, select **I already have an account**, fill out the **Add a new printer** form, then click **Add**.

9. Click **Close**.